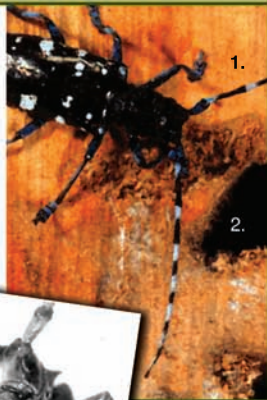


# Ask An Arborist™ Quick Reference: Asian Long Horn Beetle

## What's eating my tree? Asian Long Horn Beetles

Asian Long Horn Beetles (*Anoplophora glabripennis*) have received a lot of press lately for their disastrous effects on maple, elm, willow, poplar, horsechestnut, mulberry, ash, and black locust trees throughout Chicagoland.

The large, distinctive pests emerge from May through October. They are generally 1" to 1 ½" long, shiny black with white spots, and boast 2½" banded antenna (fig. 1). Eggs are laid in hollows chewed into the bark. There, the larvae feed for a short time before boring deeper into the tree to wreak havoc. When mature, the beetles exit the tree via round holes that are up to ½" wide (fig. 2). Signs of an Asian Long Horn Beetle infestation include dieback and waterspouts, as well as sawdust at the base of the tree and on the tops of lower limbs.



**Autumn Tree**  **Care Experts, Inc.**

*a comprehensive arboricultural firm building relationships in every season*

North Shore: 847.729.1963 • Northwest: 847.726.1991 • West: 630.725.1963 • Chicago: 773.725.1863



1. adult beetle
2. exit hole
3. headshot